

Name(s): \_\_\_\_\_

# Worksheet II

## Group 1



**A.** Which taxes are called direct and which indirect?  
Give an example of a tax for each case.

---

---

---

---

---

---

---

---

**B.** Study the following graph, which shows the level of tax rates in Greece and various other European countries. What are your conclusions?

---

---

---

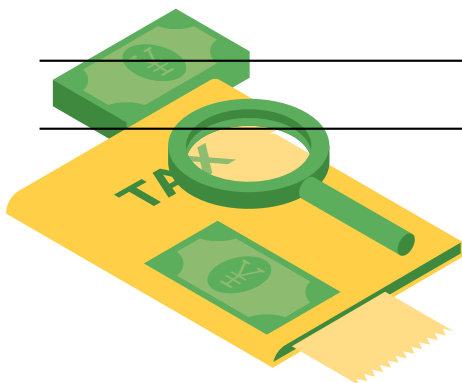
---

---

---

---

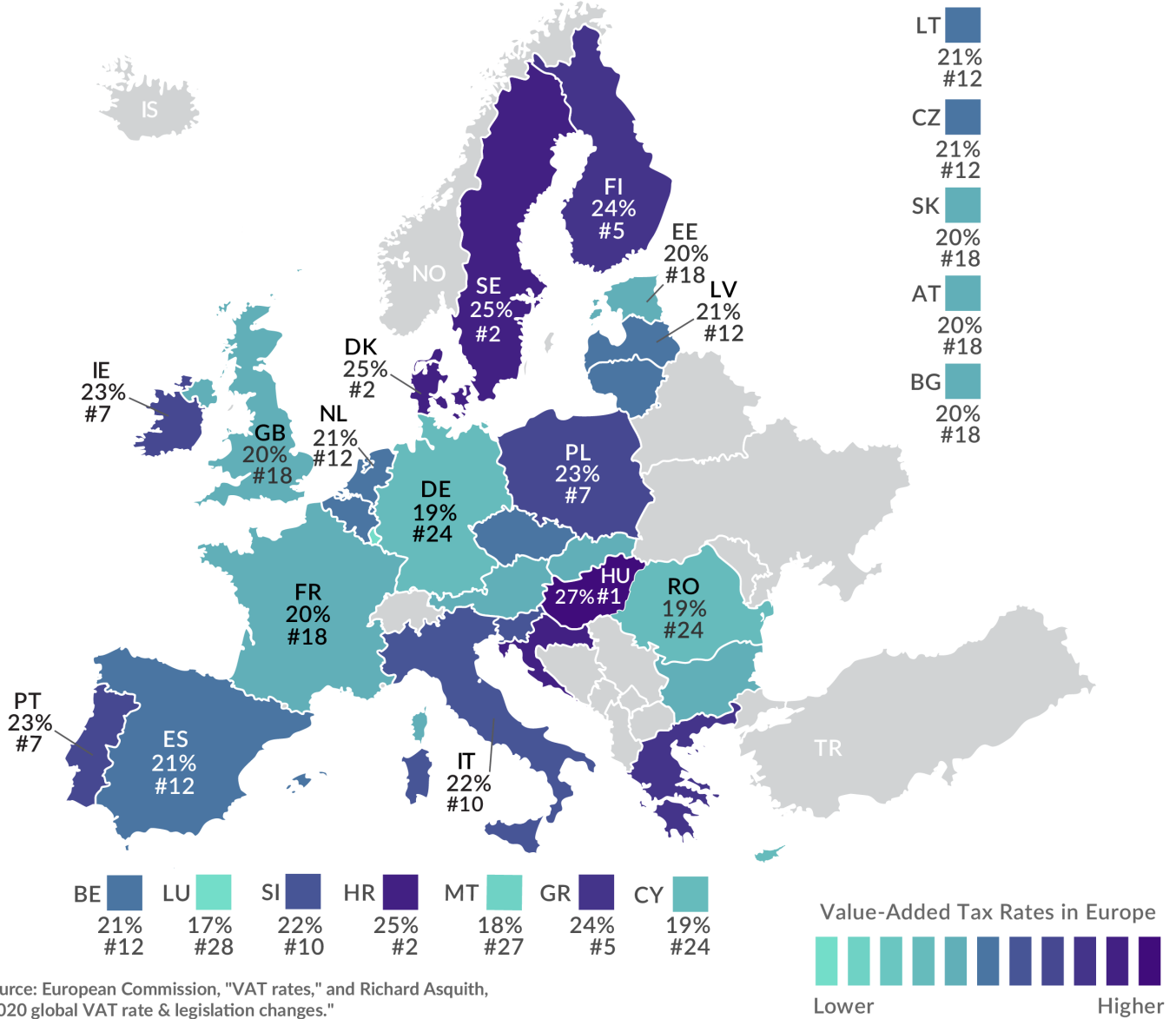
---



# Graph: Top individual income tax rates in Europe.

## VAT Rates in Europe

Value-Added Tax (VAT) Rates in European Union Countries, as of January 2020



Source: European Commission, "VAT rates," and Richard Asquith, "2020 global VAT rate & legislation changes."